

CERTIFICATE OF ANALYSIS

PRODUCT NAME: Certified Organic CBD FS Tincture - Tropical
PRODUCT STRENGTH: 900 mg
FILL LOT NUMBER: NA
TINCTURE BATCH 21179A
BEST BY DATE: 12/28/2022
HEMP EXTRACT LOT*: **B1211-002**

Click on the links to view third-party reports

Physical Attributes

Test	Method	Specification	Results
Color	SOP-100	Golden to Amber	PASS
Odor	SOP-100	Coconut and hemp, tropical	PASS
Appearance	SOP-100	Golden to Amber oil in brown glass bottle with dropper	PASS
Primary Package Eval.	SOP-132	Container clean and free of filth. Container caps tight and shrink bands intact	PASS
Secondary Package Eval.	SOP-132	Labeling Compliance Checked, Cartons sturdy and clean. Sufficient cushion material exists. Box taped and secure.	PASS

Review of Third-Party Analysis

Panel	Method	Specification	Results*	Pass/Fail
Potency - Total CBD	SOP-111	900-1,125 mg CBD LOQ** : 10 PPM† (0.001%)	1010.4 mg	PASS
Potency - D9-THC	SOP-111	None Detected LOQ: 10 PPM (0.001%)	.12%	PASS
Compliant Pesticide Panel	SOP-111	WIP-100008 : Product specification for Tinctures, Oregon Action limits apply	ND	PASS
Microbial - Stec E.Coli	SOP-111	Complies with USP 61/62	Below LOQ	PASS
Microbial - Salmonella	SOP-111	Complies with USP 61/62	Below LOQ	PASS
Microbial - Yeast and Mold	SOP-111	Complies with USP 61/62	Below LOQ	PASS
CA Compliant Heavy Metal Panel	SOP-111	Arsenic (As): ≤1.5 PPM Cadmium (Cd): ≤0.5 PPM Mercury (Hg): ≤1.0 PPM Lead (Pb): ≤0.5 PPM	ND	PASS

**Level of Quantitation, † Parts Per Million

Quality Certified *Kayla Kolber* 07/06/2021
 Kayla Kolber _____ Date
 Quality Assurance Technician



B1211-002

7USC1639 Certificate of Analysis

sample ID 25403

Stillwater Laboratories

certificate ID OMN48

total cannabinoids 1106.8mg per 30mL

THC± 32.7mg CBD± 1010.4m

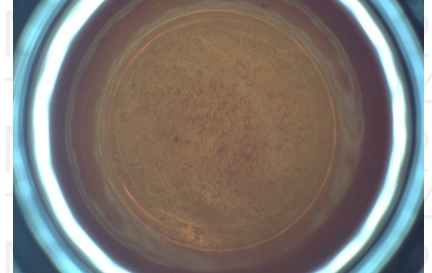
order 9236

7USC1639 Infused

analysis date 12/15/2020 4:57:23 PM

test tag 9236.1.2

sample wgt 1.0 g



Inspection MSP-7.5.1.2

DESCRIPTION: Tincture sample received in a client-labeled bottle, by commercial courier. Labeled 25403 and sample tag 9236.1.2.

Potency per 30mL

Table with columns: Compound, Amount, LOD, LOQ, error (95%CI k=2). Rows include tetrahydrocannabinolic acid (THCa), Δ9-tetrahydrocannabinol (Δ9 THC), Δ8-tetrahydrocannabinol (Δ8 THC), tetrahydrocannabivarin (THCv), cannabidiolic acid (CBDA), cannabidiol (CBD), cannabidivarin (CBDv), cannabigerolic acid (CBGa), cannabigerol (CBG), cannabinal (CBN), and cannabichromene (CBC).

± = decarbed NT = not tested NL = no limit, ND = not detected, LOD = detection limit , LOQ = quantitation limit

Large table with columns: Microbial, Solvents, Metals, Pesticides. Each column lists various substances and their test results (PASS, limit values).

SECURITY FEATURE: WATERMARK MUST MATCH CERTIFICATE ID AND ISSUE DATE

Certified by:

Signature of Kyle Larson

Kyle Larson, MSc (Biology) Deputy Director

Stillwater Laboratories Inc. MT License L00001, 7, 8 6073 US93N Suite 5 Olney MT 59927 406-881-2019

Printed 12/17/2020 3:04 PM

The data in this report is the property of and is administered by Stillwater Labs. The format, layout, and security features of this report are copyrighted by Stillwater Laboratories Inc. © 2020



ISO/IEC 17025:2017



Certificate #4961-01

https://portal.a2la.org/scopepdf/4961-01.pdf

certificate ID
1GA37

OFTT900

7USC1639 Certificate of Analysis

21179A

rec'd 6/30/2021 4:20:31 PM

order 11182



Stillwater
Laboratories



Microbial

	MSP-7.5.1.10	limit	LOD	LOQ	error	result
E.coli	ND	OCFU	0.010.11	±0.1CFU		PASS
Salmonella sp.	ND	OCFU	0.010.11	±0.1CFU		PASS
molds	ND	10000CFU	1.915.81	±5.8CFU		PASS

SECURITY FEATURE: WATERMARK MUST MATCH CERTIFICATE ID AND ISSUE DATE

Certified by:



<https://customer.a2la.org/index.cfm?event=directory.detail&labPID=423635B2-5128-4C6F-871A-419DCF43B0D7>

Stillwater Laboratories Inc.
MT License L0001, L00007
6073 US93N Suite 5, Olney MT 59927
406-881-2019

INSTRUMENTS: Potency by HPLC (LC2030C-JV), solvents and terpenes by GCMS (QP2020/HS20), pesticides and mycotoxins by LCMSMS (LC8060), microbial by qPCR (AriaMx) and plating (Hardy Diagnostics), metals by ICPMS (ICPMS-2030)

• All testing was completed onsite at 6073 US93N, Olney MT • Potency (cannabinoid concentration) is calculated as: $[\text{cannabinoid}] = [\text{cannabinoid}]_{\text{HPLC}} \times \text{volume}_{\text{dilution}} / \text{M}_{\text{dry}}$ • Decarboxyated cannabinoid concentration is calculated $\text{XXX}_{\text{total}} = 0.877 \times \text{XXXa} + \text{XXX}$ • Standards are used to calibrate the resulting data and estimate error using a standard estimate of error method; LOD is the limit of detection (3.3s), LOQ is the limit of quantification (3xLOD), and experimental error is calculated from weighing, dilution, and interpolation error using the formula $s_e^2 = \sum (\partial f / \partial i)^2 s_i^2$ where i is the contributor to error. The 95% confidence range is calculated from: $(\text{concentration}) \pm t_{\text{CL},90} \times s_e$. Sampling error is not considered in error calculations. ND = not detected (< LOD), NT = not tested, NL = no limit, NA = not applicable, ‡ = decarbed

Printed 7/3/2021 12:10 PM